



CHARLOTTE
FUTURE

2040
COMPREHENSIVE
PLAN

OUR CITY. OUR PLAN. OUR FUTURE.





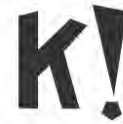
WELCOME

HOUSEKEEPING



TUNE IN TO HEAR

Please tune your radio station to FM 106.5 for English or FM 90.5 for Spanish to hear the CLT Future 2040 plan from the comfort of your car. All audio/sound will be transmitted through your car speakers. You are in control of your speaker quality.



KAHOOT APP *(Demographic Survey)*

Please click the link and download the app. There will be a special surprise for those who choose to participate. Download the Kahoot App
<https://kahoot.com/home/mobile-app/>



RESTROOMS

Restrooms will operate at limited capacity. 6' distancing and a mask will be required while standing in line. Restroom attendants will enforce capacity, line distancing, and sanitation of facilities. ADA restroom is available.



STAY IN YOUR VEHICLE

Attendees will not be permitted to leave their vehicles or set up a tailgate or extra seating in their parking spot.

LET'S STAY SAFE



Drive into Charlotte's
FUTURE

**PLEASE
REMAIN
IN YOUR
CAR**

CHARLOTTE
FUTURE
2040 COMPREHENSIVE PLAN

CITY of CHARLOTTE

COVID-19 ALERT

WEAR
a cloth mask over
your nose and mouth.

WAIT
6 feet apart. Avoid
close contact.

WASH
your hands or
use hand sanitizer.

CHARLOTTE
FUTURE
2040 COMPREHENSIVE PLAN

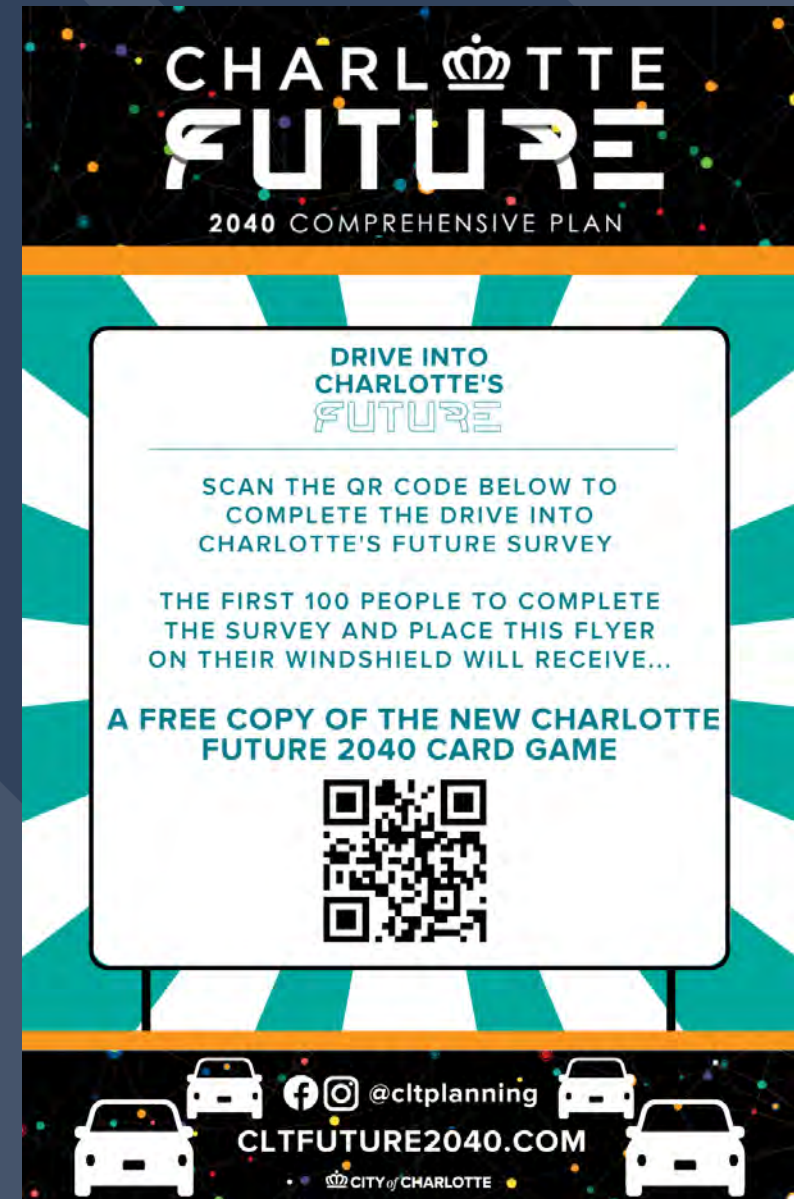
Stop the Spread.

CITY of CHARLOTTE

Take The Survey

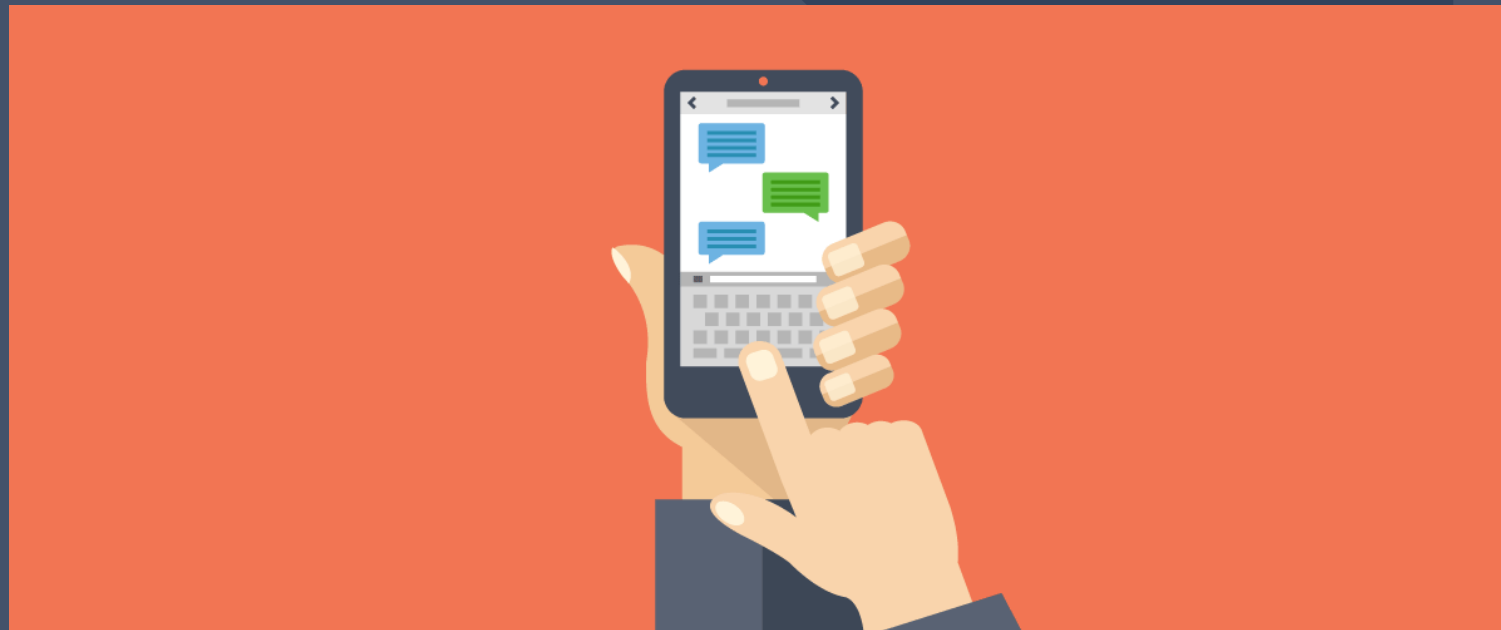
Scan the QR code on your flyer

The first 100 people to complete the survey and place this flyer on their windshield will receive a **FREE** copy of the **NEW** Charlotte Future 2040 Card Game!!!



PARTICIPATION INSTRUCTIONS

TEXT Questions and Comments:
(970) 670-0663



PARTICIPATION INSTRUCTIONS

- **WINDSHIELD WIPERS:** Turn on for an attendant (written comment, technical difficulty, etc.)
- **HEADLIGHTS:** Flash to show support
- **FLASHERS:** Turn on to express concern

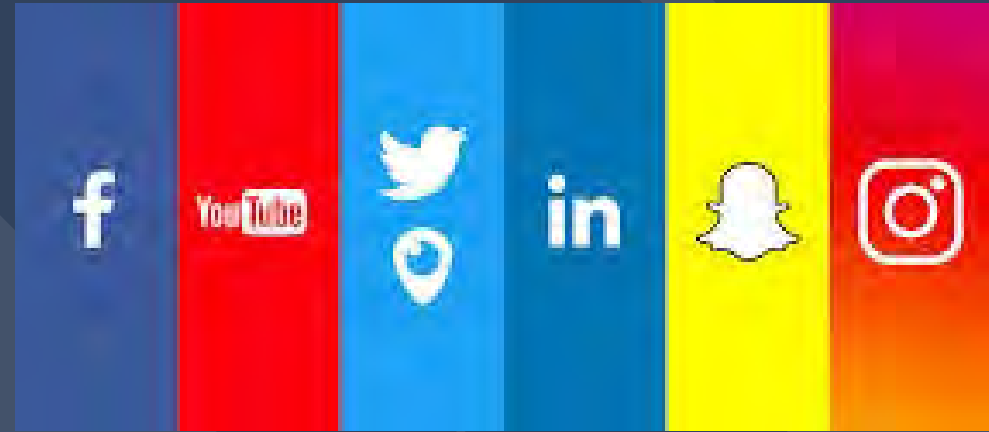
** Please refrain from honking your horn unless prompted or there is an emergency*



PARTICIPATION INSTRUCTIONS

Social Media Tags:

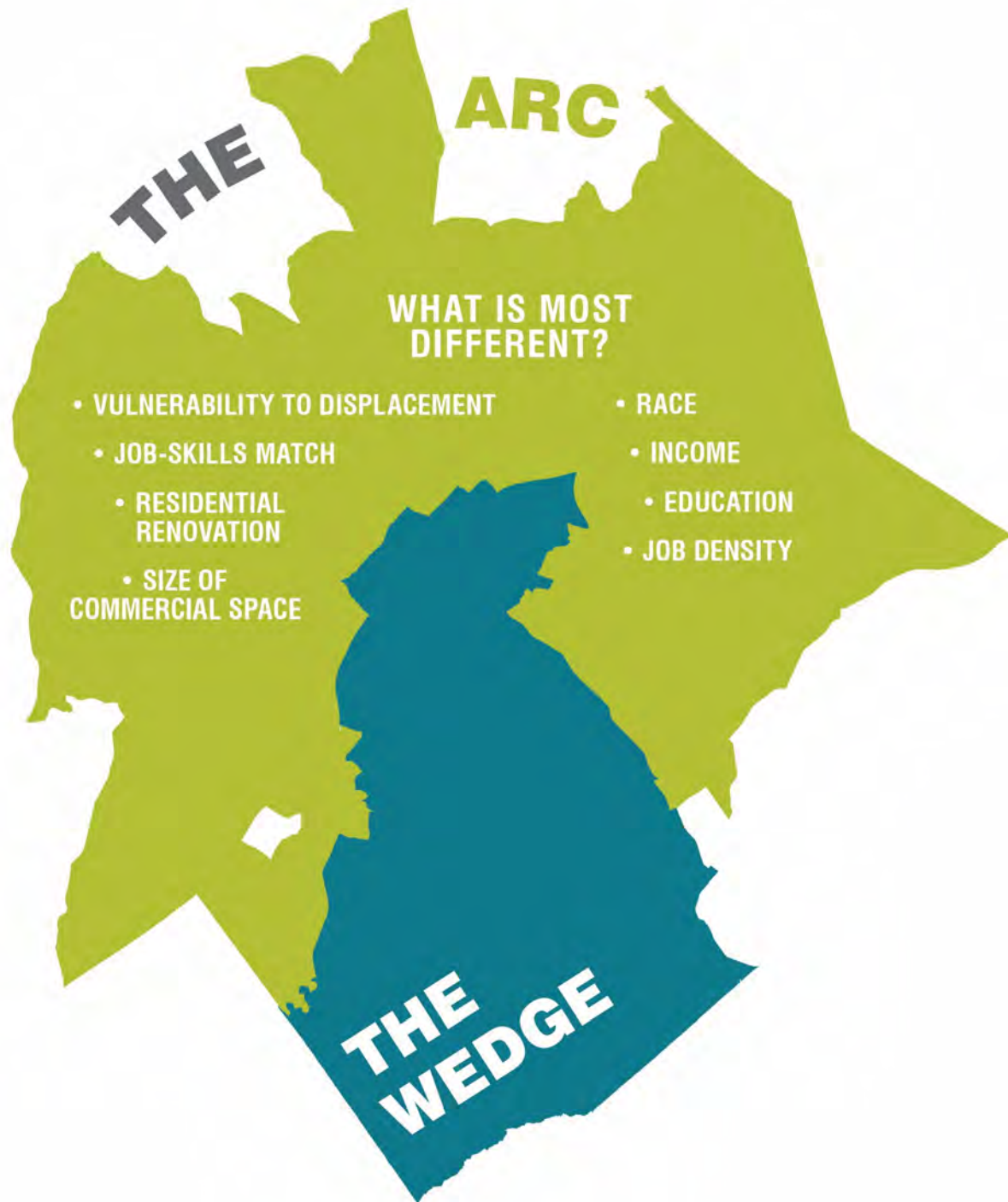
- **#cltfuture2040**
- **#imagineCLT**
- **#clt2040drivein**





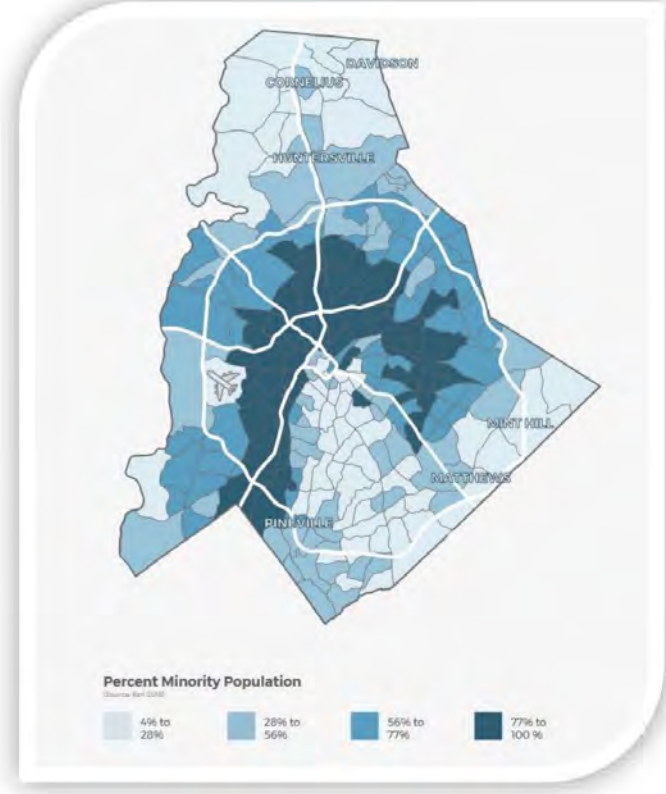
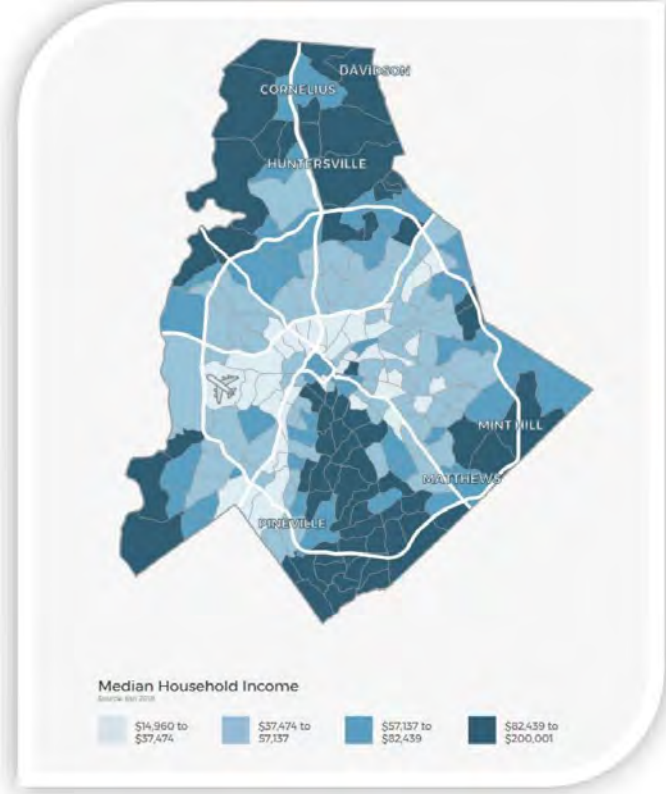
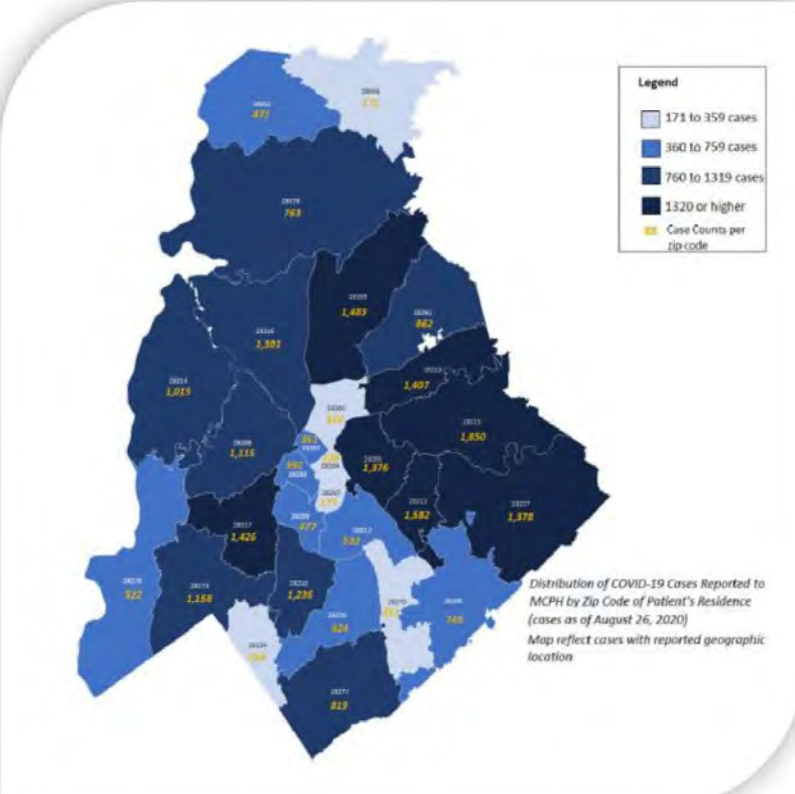
WHY ARE WE DOING A COMPREHENSIVE PLAN?





Distinct spatial pattern described as an “arc” of communities of color and concentrated poverty

Race, Income and COVID-19



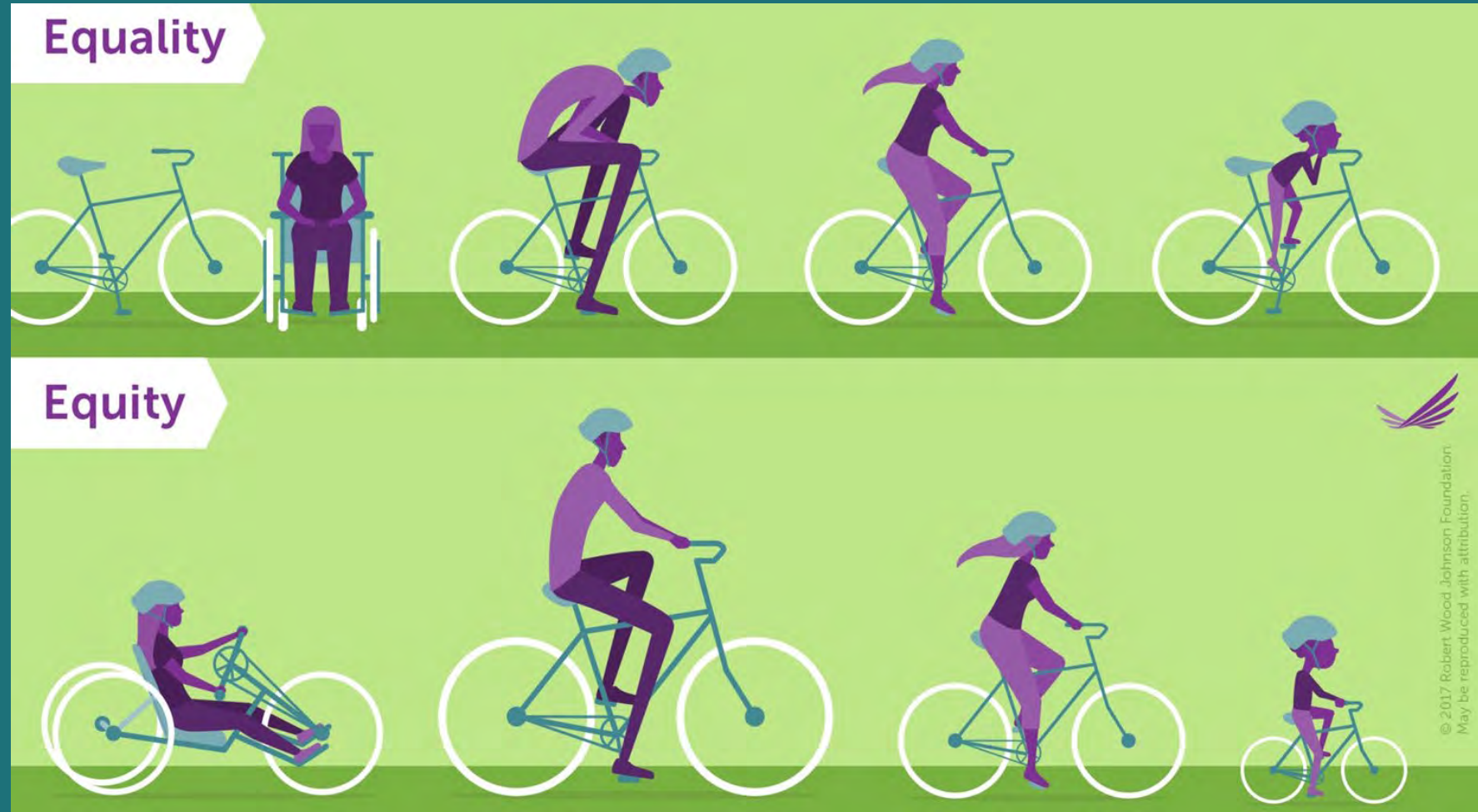
An aerial, high-angle photograph of a city street at night. The street is illuminated with streetlights, and a large, colorful mural of the words "BLACK LIVES MATTER" is painted across the pavement. The letters are filled with various images and patterns, including a woman's face, a person holding a flag, and abstract designs. The street is flanked by tall buildings and trees. A crowd of people is gathered on the street, and a few cars are visible. The overall scene is a vibrant display of social activism.

BLACK LIVES MATTER



EQUITY MEANS...

1. Being **FAIR** about investments in our City.
2. Being **JUST** and doing something about the unfairness.



© 2017 Robert Wood Johnson Foundation.
May be reproduced with attribution.



CHARLOTTE
FUTURE

2040
COMPREHENSIVE
PLAN

WHAT WILL THE PLAN DO?

OUR CITY'S "GUIDING LIGHT"

- **Guides our growth** over the next 20 years.
- A **"living document"** that integrates community input and best practices for growth, development and capital investments.
- Addresses equity, transportation, quality of life, economic development, jobs, upward mobility, affordable housing, health, safety, and sustainability.



RELATIONSHIP TO OTHER PLANS

A Comprehensive Plan is overarching policy guidance and **connects with other plans for more detailed information.**

Goals for Coordination:

- Leverage community engagement
- Use similar terms
- Seek connections in policies
- Coordinate plan schedules

CURRENT, ONGOING AND PROPOSED PLANS

2030 Transit System Plan	Strategic Energy Action Plan	Water Supply Master Plan	Transportation Action Plan
Charlotte Walks	Envision My Ride	Vision Zero Action Plan	Housing Framework
Charlotte Bikes	Unified Development Ordinance	CONNECT Beyond	BEYOND 77
ALL-IN Center City 2040 Vision Plan	University City Vision Plan	Meck. Playbook	Tree Canopy Action plan
Charlotte Moves (Strategic Mobility Plan)	Food Systems Study	Comp. Storm Water Plan	Citywide Jobs Plan



CHARLOTTE
FUTURE

2040
COMPREHENSIVE
PLAN

WHO DID WE HEAR FROM?

FOUR PHASE PROCESS



COMMUNITY ENGAGEMENT

- **Robust, innovative, and inclusive**
- Focused on **access to information** and meeting people where they are
- Input from **groups representing all segments of Charlotte's population**
- **Engaged people who traditionally have not been in the room during the planning process** – people of color, youths, non-English speaking residents, and those with lower incomes





CHARLOTTE
FUTURE

2040
COMPREHENSIVE
PLAN

WHAT DID WE HEAR?

GUIDING PRINCIPLES & VISION ELEMENTS



OUR CITY. OUR PLAN. OUR FUTURE.

10 PLAN GOALS



1. 10-MINUTE
NEIGHBORHOODS



2. NEIGHBORHOOD
DIVERSITY AND
INCLUSION



3. HOUSING
ACCESS
FOR ALL



4. TRANSIT- AND TRAIL-
ORIENTED
DEVELOPMENT



5. SAFE AND
EQUITABLE MOBILITY



6. HEALTHY, SAFE, AND
ACTIVE COMMUNITIES



7. INTEGRATED NATURAL
AND BUILT
ENVIRONMENTS



8. DIVERSE AND
RESILIENT ECONOMIC
OPPORTUNITY



9. RETAIN OUR
IDENTITY
AND CHARM



10. FISCALLY
RESPONSIBLE

What We Heard From the Community:



- **Address disparities and inequity** in access to basic daily household needs
- Ensure **all parts of Charlotte** are a part of future growth
- More **equitable distribution/allocation** of costs and benefits
- Help to **keep and create a variety of housing** that is attainable for all residents

01 10-MINUTE NEIGHBORHOODS

All Charlotte households will have access to essential amenities, goods, and services within a comfortable, tree-shaded 10-minute walk, bike, or transit trip by 2040.



BIG IDEAS

- Develop a robust network of food co-ops, community gardens and neighborhood-based food sharing
- Create a culture of developer-community collaboration through Community Benefit Agreements

02 NEIGHBORHOOD DIVERSITY & INCLUSION

Charlotte will strive for all neighborhoods to have a diversity of housing options by increasing the presence of middle density housing and ensuring land use regulations allow for flexibility in creation of housing within existing neighborhoods.



BIG IDEAS

- Allow more housing types in traditional single-family zoning districts to encourage housing diversity everywhere in our community

03

HOUSING ACCESS FOR ALL

Charlotte will ensure opportunities for residents of all incomes to access affordable housing through the preservation of naturally occurring affordable and workforce housing and increasing the number of affordable and workforce housing units through new construction.



BIG IDEAS

- **Lead the charge to pass enabling legislation for mandatory inclusionary zoning and implement throughout the community**
- **Create a robust program of reparations or restorative justice targeting homeownership, creation and growth of small business, and equity building for the Black community, including strategic application of existing tools (e.g. low interest loans, small business assistance, etc.) and development of new tools (e.g. community land trusts, commercial lease assistance, etc.)**

What We Heard From the Community:

- Focus a good portion of **growth in mixed use centers and along transportation corridors**
- Add **more high-quality transit and trail connections throughout the community**, especially in places with poor access today
- Create **safer and more accessible transportation infrastructure** and options across the entire city
- Create **more places** that are accessible from neighborhoods that are **walkable and bikeable**



04

TRANSIT- AND TRAIL-ORIENTED DEVELOPMENT (2T-OD)

Charlotte will promote moderate to high-intensity, compact, mixed-use urban development along high-performance transit lines and near separated multi-use pathways or trails.



BIG IDEAS

- Prioritize equitable TOD (E-TOD) along high performance transit and trail corridors

05

SAFE AND EQUITABLE MOBILITY

Charlotte will provide safe and equitable mobility options for all travelers regardless of age, income, ability, race, where they live, or how they choose to travel. An integrated system of transit, bikeways, sidewalks, shared use paths, and streets will support a sustainable, connected, prosperous, and innovative network that connects all Charlotteans to each other, jobs, housing, amenities, goods, services, and the region.



BIG IDEAS

- Set an aggressive mode shift goal that determines how it 1) prioritizes investment in different modes of transportation, 2) allocates limited right-of-way space among different modes of transportation, 3) manages growth and travel demand, 4) sets new policies, and 5) supports equity and affordable transportation choices in all areas of the City

What We Heard From the Community:

- **Address disparities** in factors contributing to personal and community **health**
- Create strategies to address **healthy food deserts**
- Maintain or enhance **Charlotte's tree canopy, drainage ways and natural areas**
- Plan for **better air quality and water quality**
- Integrate **sustainable and resilient** building and development practices



06

HEALTHY, SAFE, AND ACTIVE COMMUNITIES

All Charlotteans will live and work in safe and resilient neighborhoods that enable healthy and active lifestyles by reducing exposure to harmful environmental contaminants, expanding and improving the quality of tree canopy cover, encouraging neighborhood investment in walking, cycling, and recreation facilities, and providing access to healthy food options and health care services.



BIG IDEAS

- Institute a program for local grassroots shared management or adoption of and programming of public open space, and encourage development of organizations throughout the City to create additional opportunities to engage in active living and help develop healthy neighborhoods

07

INTEGRATED NATURAL AND BUILT ENVIRONMENTS

Charlotte will protect and enhance its surface water quality, tree canopy, and natural areas with a variety of trees, plantings, green infrastructure, green building practices, and open space at different scales throughout the entire community as a component of sustainable city infrastructure.



BIG IDEAS

- Implement the Strategic Energy Action Plan by implementing Resilient Innovation District (RID) programs throughout the City that are responsive to different Place Types and contexts and promote net zero development and carbon neutrality

What We Heard From the Community:



- Support **upward mobility**
- Improve **access to and diversity of employment options**, especially on east and west sides
- **Mitigate residential and business displacement**
- Honor and respect **history and culture**
- Address **major disparities in spending** across the community

08 DIVERSE AND RESILIENT ECONOMIC OPPORTUNITY

Charlotteans will have opportunity for upward economic mobility through access to a diverse mix of jobs and careers that align with education and skill levels of residents and the economic strengths of the region.



BIG IDEAS

- Develop Regional Activity Centers in the East and West Middle and Outer Areas with jobs, housing, schools and daycare services

09 RETAIN OUR IDENTITY AND CHARM

Charlotte will retain the identity of existing neighborhoods by intentionally directing redevelopment, limiting displacement and cultivating community-driven placemaking that elevates the importance, quality and design of places.



BIG IDEAS

- Protect Naturally Occurring Cultural Districts (NOCDs), especially in underserved neighborhoods, established neighborhood serving commercial areas, and ETODs
- Become a leader in neighborhood-influenced placemaking, public art and other cultural installations.

10 FISCALLY RESPONSIBLE

Charlotte will align capital investments with the adopted growth strategy and ensure the benefit of public and private sector investments benefit all residents and limit the public costs of accommodating growth.



BIG IDEAS

- Direct at least half of public infrastructure spending over next 20 years to the most vulnerable communities



**CREATING COMPLETE
COMMUNITIES +
AN EQUITABLE CHARLOTTE**

CREATING COMPLETE COMMUNITIES



CREATING COMPLETE COMMUNITIES

- 10 Place Types are the building blocks of complete communities in Charlotte
- All areas of the community should have places to work, live and play
- Each Place Type includes recommendations for land use, character, transportation, and natural resources
- Place Types will be further articulated and codified in UDO

NEIGHBORHOOD 1	NEIGHBORHOOD 2	PARKS AND PRESERVES	
<p>A mix of single-family residential and low-density multi-family neighborhoods with detached housing types as well as duplexes and triplexes. Other uses include civic and institutional uses and services like schools and parks.</p> 	<p>A multi-family residential area that includes housing choices such as apartments and condominiums and neighborhood services, like grocery stores, offices, and institutional uses.</p> 	<p>Parks include play grounds, sports fields, pavilions, recreation facilities, and other uses that allow people to gather and play. Preserves are intended to remain passive, including those that are to be protected and conserved for the foreseeable future. These include wildlife refuges, and nature preserves with some passive amenities and activities.</p> 	
NEIGHBORHOOD CENTER	COMMUNITY ACTIVITY CENTER	REGIONAL ACTIVITY CENTER	
<p>The smallest type of center, a mixed use place that offers higher intensity residential uses and neighborhood services, like a grocery store, offices and institutional uses that serve the immediate area.</p> 	<p>Smaller commercial and civic areas that provide services for the surrounding area to low to mid-rise buildings. Today these places arrange use shopping centers, but over time it is expected that these places will develop or experience infill and support a greater mix of uses due to their high level of accessibility from multiple neighborhoods.</p> 	<p>The largest centers of activity, including downtown, with a walkable and diverse mix of uses that serve the region. Buildings are mid to high-rise, tapering down towards the neighborhoods. They provide a mix of residential, office, retail, civic and open space uses.</p> 	
COMMERCIAL	CAMPUS	INNOVATION MIXED-USE	MANUFACTURING & LOGISTICS
<p>Mostly auto-oriented places that accommodate people traveling from one place to another, typically by car. Primarily retail and office uses with hotels and larger offices located at interstate interchanges.</p> 	<p>Campuses provide places for office, healthcare, education, religious or similar institutions/ organizations that require a significant amount of space for various activities. Campuses usually have a specific use and are distinct from their surroundings.</p> 	<p>Lower intensity industrial and employment uses, including office, research, light manufacturing, warehousing, distribution, and can include residential and more creative uses such as art studios and breweries.</p> 	<p>Higher intensity uses that are major economic and employment drivers, including manufacturing, waste processing, power generation, junk and scrap metal yards and other similar uses. Many uses require space for outdoor storage, parking and maneuvering for equipment, loading and warehousing, and should be buffered from surrounding areas.</p> 



NEIGHBORHOOD 1

- Provide places for neighborhoods with a variety of housing types, where **single-family housing** is still the **predominant use**.



NEIGHBORHOOD 2

- Provide a range of **moderate to higher intensity housing types**, including apartment and condominium buildings, to meet the needs of a diverse population.



PARKS AND PRESERVES

- Protect land that is intended to **remain as parks or natural preserves** in perpetuity.



NEIGHBORHOOD CENTER

- Provide places that have a **pedestrian-friendly** focal point where nearby residents can access **daily shopping needs and services** within a 5-10 minute walk or a short drive.



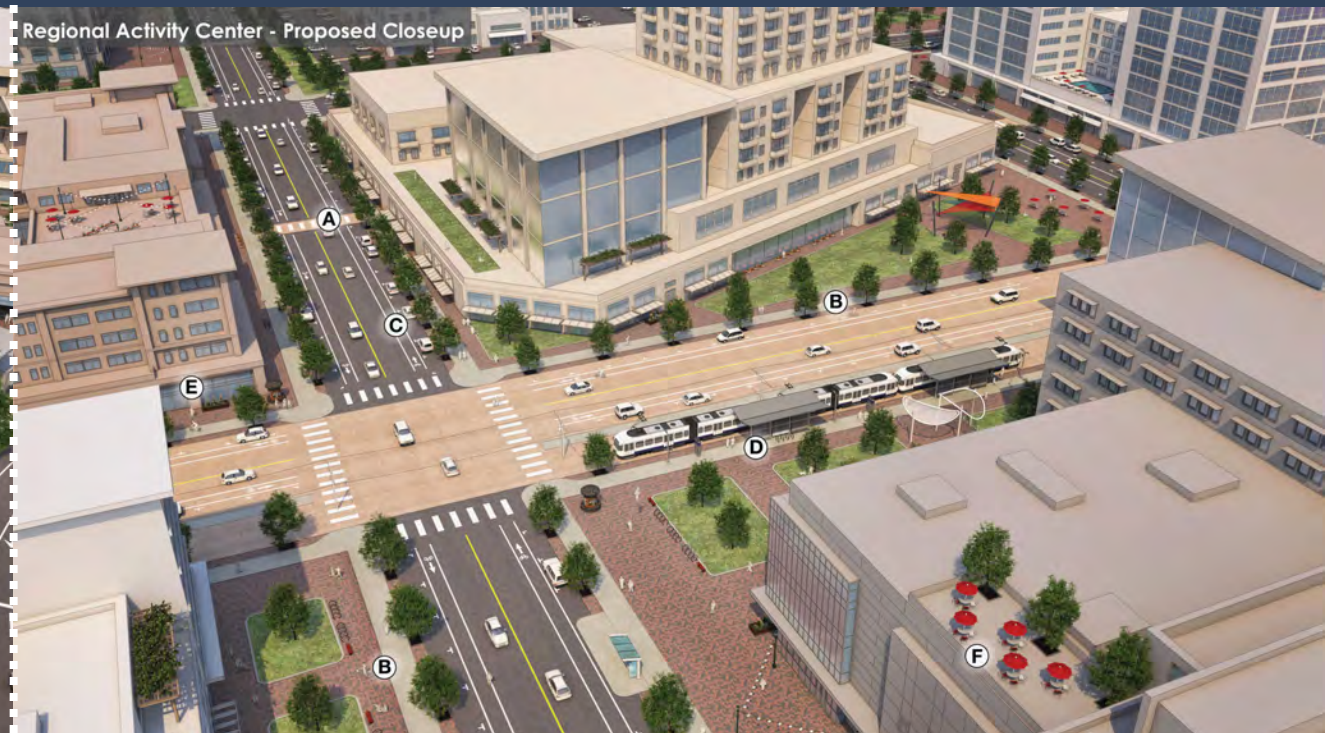
COMMUNITY ACTIVITY CENTER

- **Low to mid-rise commercial, residential civic/institutional, and mixed-use buildings** in a pedestrian-oriented environment.



REGIONAL ACTIVITY CENTER

- Provide **major employment locations and cultural destinations** for residents from throughout the Charlotte region.



COMMERCIAL

- Provide places for **the sale of goods and services** in locations readily **accessible by automobile**.



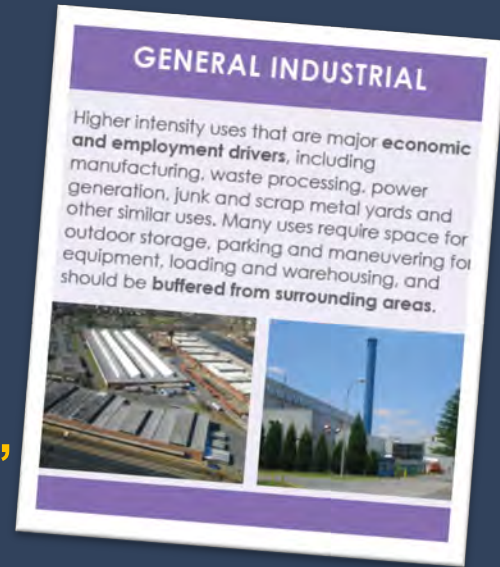
CAMPUS

- Provide places for **large, multi-building institutions**, such as educational, religious, civic, or health facilities, or for a **concentration of office and research and development uses**.



MANUFACTURING & LOGISTICS

- Contribute to **economic viability** by providing places of employment for a range of **manufacturing, logistics, production and distribution uses.**



INNOVATION MIXED-USE

- Contribute to Charlotte's economic viability by providing **mixed-use urban places** that include light manufacturing, office, residential, and retail.

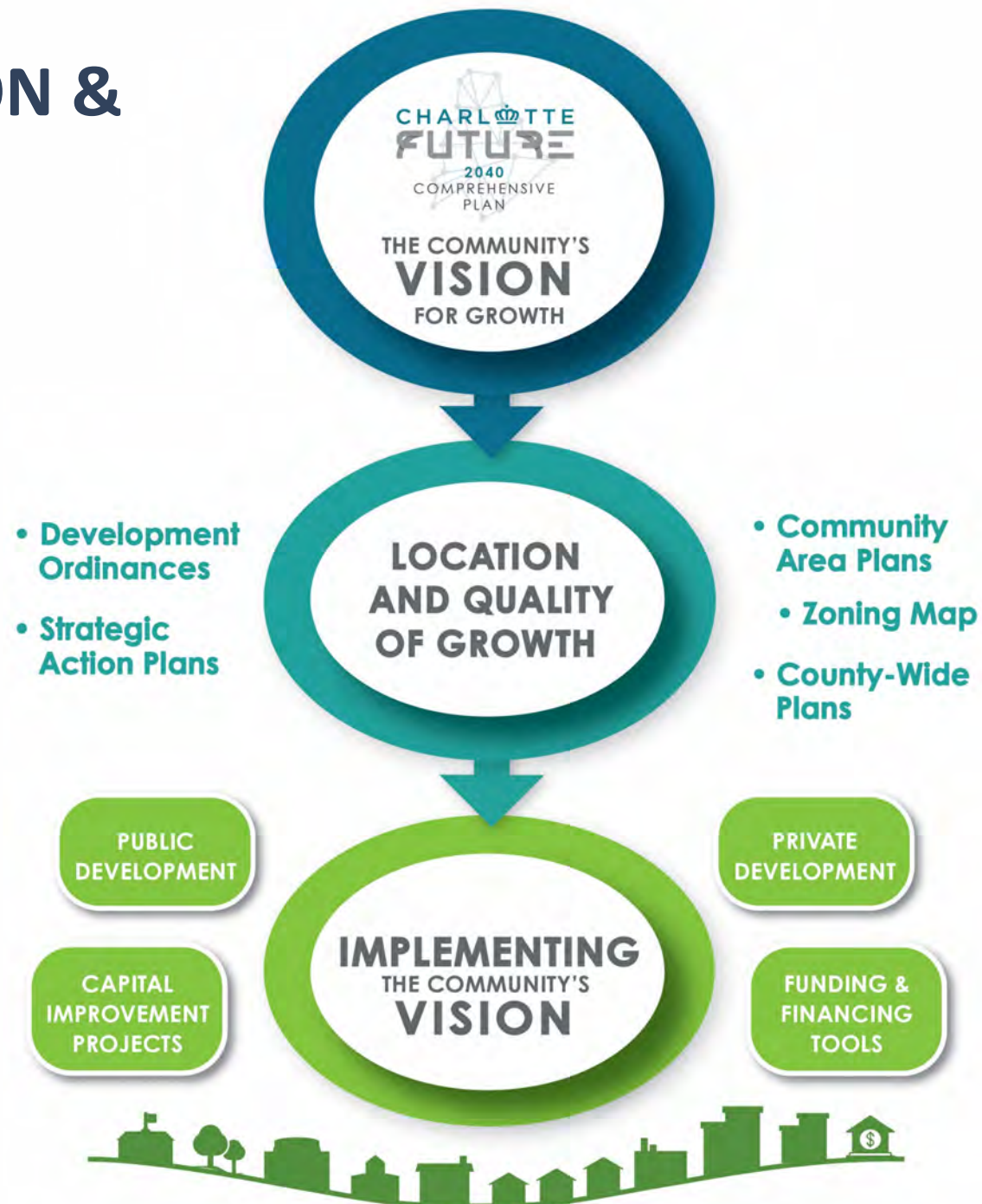




2040
COMPREHENSIVE
PLAN

HOW DOES THE PLAN WORK?

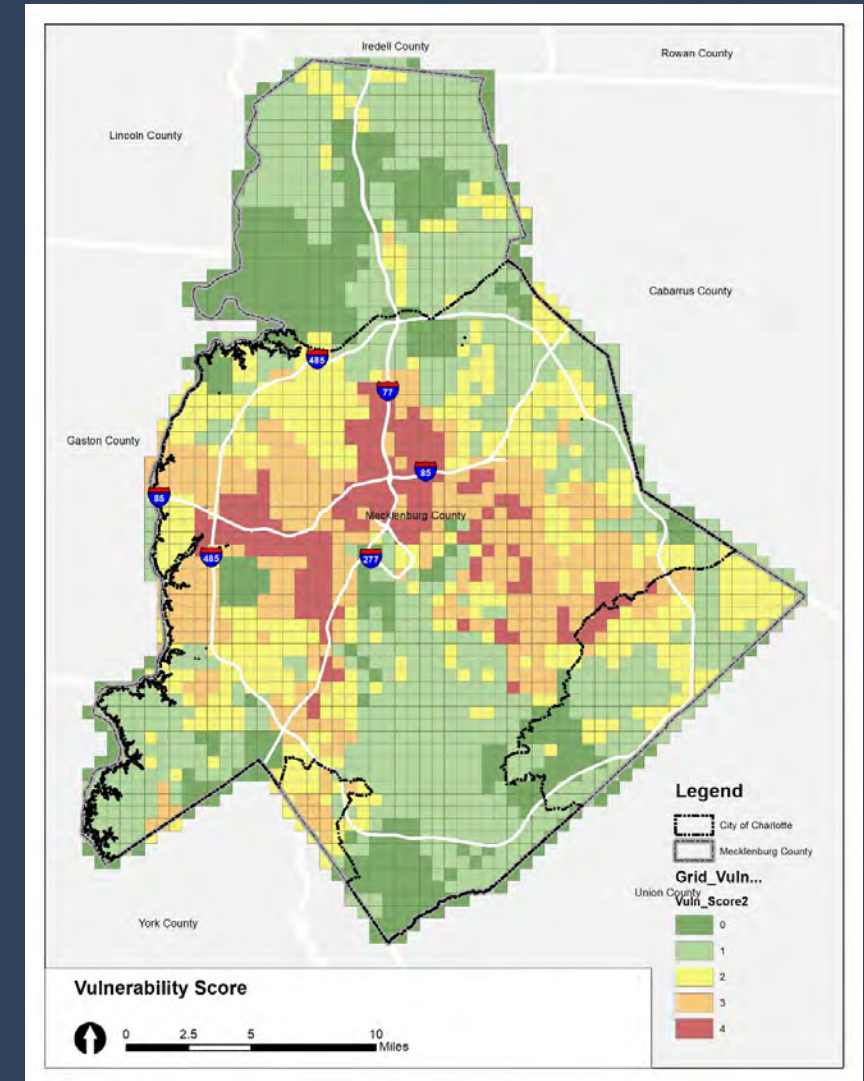
IMPLEMENTATION & COORDINATION



EQUITY METRICS:

What are Greatest Needs and Issues?

- Vulnerability to Displacement Overlay
- Access to Essential Amenities, Goods and Services
- Access to Housing Opportunity
- Access to Employment Opportunity
- Environmental Justice



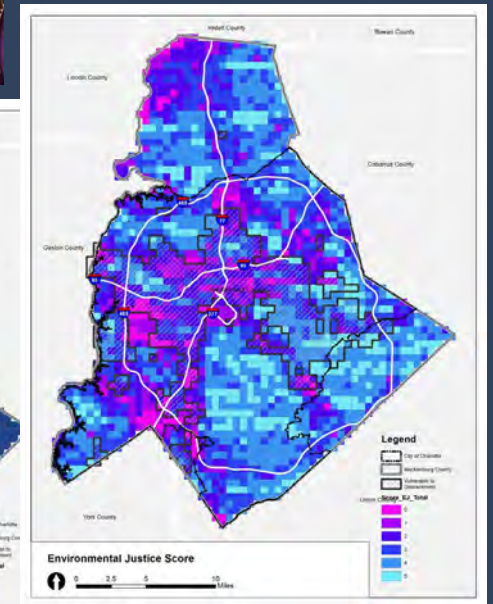
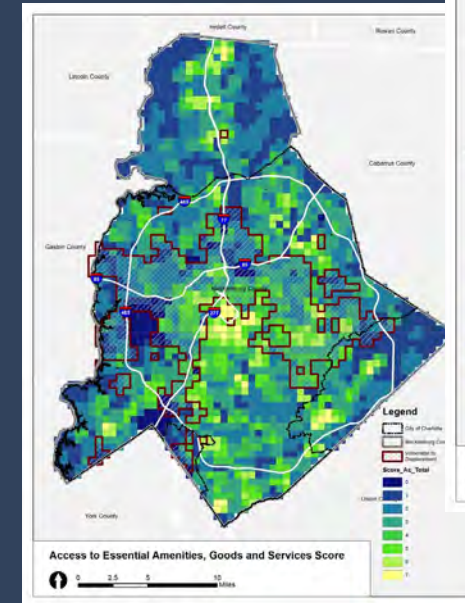
EQUITY METRICS:

How and Where to Prioritize Limited Resources?

- Place and Amenity Priorities in the Plan
- Place Type Mapping
- Zoning District Mapping
- Community Area Planning

How to Ensure Costs and Benefits are Equitable?

- CIP
- Public-Private Partnerships
- Community Benefits Agreements
- Development Impact Fees
- Other Tools



INCLUSIVE CHANGE MANAGEMENT

How to
Ensure Costs
and Benefits
are Equitable

- Promoting Inclusion and Diversity
- Facilitating Transitions Over Time
- Understanding Market Readiness and Pressure
- Addressing Adjacencies and Ensuring Access

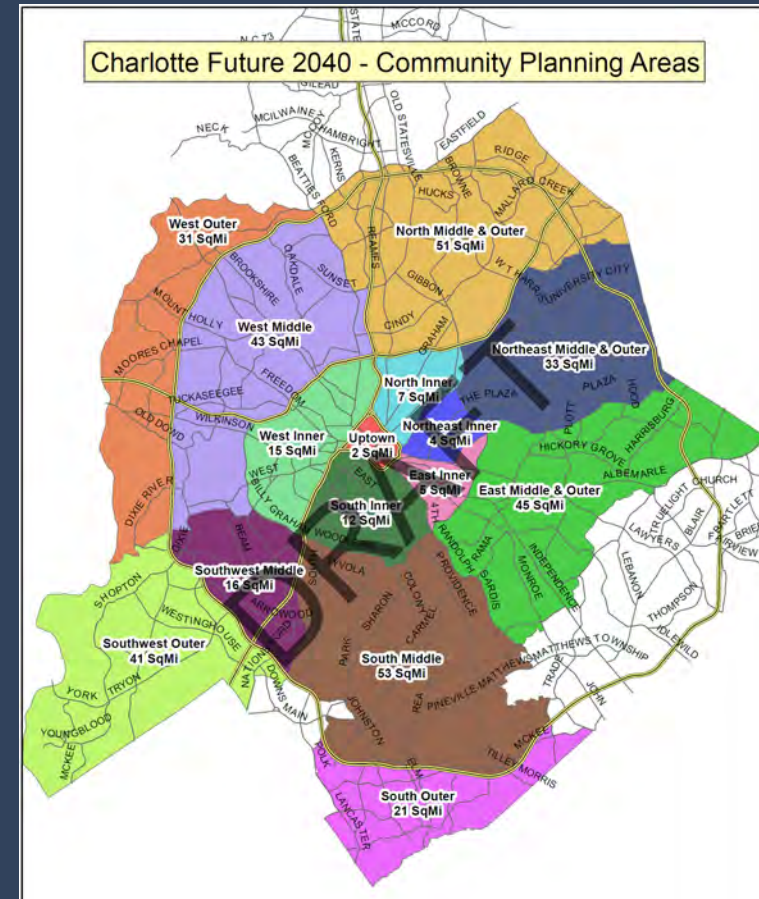
COMMUNITY AREA PLANNING

Phase 1: Define Community Planning Areas

- Identify Priorities for Each Community Planning Area
- Private Investments
- Public Investments

Phase 2: Map Future Place Types (2021)

Phase 3: Develop Community Area Plans (2022 and beyond)





HOW WILL THE PLAN AFFECT ME?

If You Are A Resident:

- Transparency of planning process and predictability of development
- Updated policies, programs, and projects to address Charlottes' needs
- Support bringing affordable housing and essential goods and services within a 10-minute walk, bike, or transit ride

If You Are A Business Owner:

- Clear understanding of investment strategy
- More flexibility for uses through place types
- Identify desired neighborhood businesses

If You Are a Developer:

- Updated and refined development goals through Place Types
- Consistent development regulations
- Better definition of where uses are allowed
- Clarity of city priorities
- Predictability of development

If You Are City Council:

- Straightforward and easier-to-understand planning process
- Transparency and predictability of the process
- Fewer rezoning cases



WHAT HAPPENS AFTER PLAN ADOPTION?

WHAT HAPPENS AFTER PLAN ADOPTION?

ACTIVITY	2021	2022	2023+
Define Community Planning Areas	█		
Map Future Place Types	█		
UDO Adoption*	█		
UDO Mapping		█	
Area Planning		█	█

Note:

North Carolina General Statutes, Section 160D

Effective January 1, 2021



CHARLOTTE
FUTURE

2040
COMPREHENSIVE
PLAN

WHAT HAPPENS AFTER TODAY?

HOW TO COMMENT ON THE PLAN?



ONLINE

- Comment on the E-Plan at:
publicinput.com/2040feedback



VIA EMAIL

- Email your comments to:
cltfuture2040@charlottenc.gov



THROUGH THE MAIL

- Request a comment form by email:
cltfuture2040@charlottenc.gov
- Mail to:
**Charlotte Future 2040,
600 E. 4th Street 8th Floor
Charlotte, NC 28202**



OVER THE PHONE

- Call Charlotte Mecklenburg 311:
[Leave a message with your comment](#)

CITY-BUILDING CARD GAME

- Virtual & Deck of Cards – accessible, simple, fun
- Spanish Translation
- Focus on how to build a vibrant city using Plan Policies & Place Types

Upcoming Events

Nov 18th, Dec 3rd,

Dec 16th, and More!

6:30 - 8:30pm hosted on Zoom

- Email us at:
cltfuture2040@charlottenc.gov



STAY CONNECTED

01 JOIN OUR E-MAIL LIST
cltfuture2040@charlottenc.gov

02 VISIT OUR WEBSITE
charlottefuture.com/2040

03 FOLLOW US
  @cltplanning

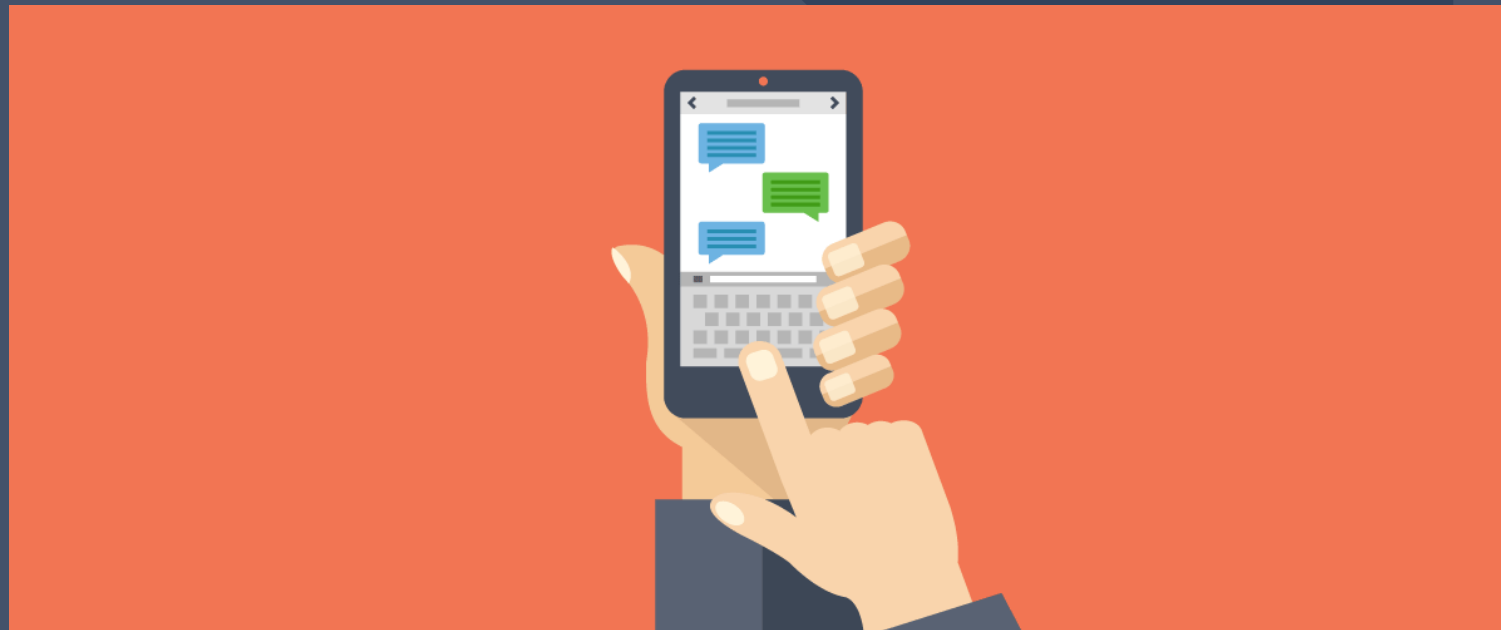


CHARLOTTE
FUTURE | 2040
COMPREHENSIVE
PLAN

OUR CITY. OUR PLAN. OUR FUTURE.

PARTICIPATION INSTRUCTIONS

TEXT Questions and Comments:
(970) 670-0663



THANK YOU!
Drive home safely.

